




TAPEMYDAY

ENJOY. SHARE. REMEMBER

An introduction to the TMD GigaSelfie system



ENJOY. SHARE. REMEMBER.

The digital world is ever-changing and with that, photo and video sharing needs evolve as well. TAPEMYDAY understands this change and acts on it by designing solutions that fit the modern consumer's demand.

We help you sell more photos and videos and drive online awareness of your attraction.

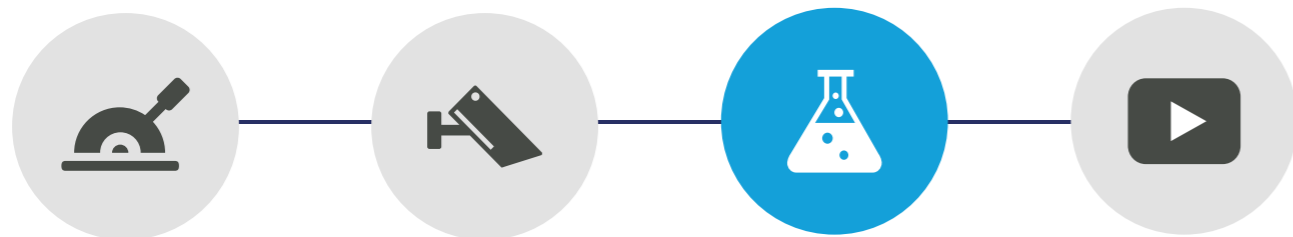
Table of Contents

This document contains information about the TMD GigaSelfie system, which produces amazing videos that incrementally zoom out from personal close-up to a panoramic backdrop. Here we will show you how the system is set up, how it works and what the specifications are of this system.

- 01 How It Works**
How we help you generate sales and satisfaction.
- 02 System Overview**
A more in-depth introduction of the system.
- 03 The Journey**
What to expect from the system.
- 04 Specifications**
The possibilities and things to keep in mind.
- 05 Contact**
Have a question? Want to chit-chat?

Process

Any TapeMyDay system at its core shares the same high-quality approach to image acquisition and image processing. With exact configurations varying per application and user requirement, the below describes our principle workflow:



Trigger.

This is the cue that initiates action, Triggers can come in many forms.

Capture.

A recording is made. Several cameras may coordinate tasks.

Make.

The recipe defines how each video is mixed into the desired end-product.

Sell.

The end-product is ready for sales and moments away from being enjoyed by your guests.

Your partner in imaging solutions that work,

When you provide a world class experience, you want your guests to bring home a lasting memory that reflects the pride, care and quality that was invested in building your attraction.

In an era where smartphones are prevalent, video content is just as desirable as print photos and everything is a click away, you need integrated solutions that cater to the evolving demands of the modern consumer.

TAPEMYDAY has understood these evolving dynamics and is dedicated to providing solutions that work. Our methods of generating all types of media content are reliable, highly automated, and cutting-edge.

Whether to venture into a jointly designed custom solution, or to implement existing building blocks to the highest effectiveness, we are your committed partners. Let's start building a roadmap that fulfills your attraction imaging needs today.



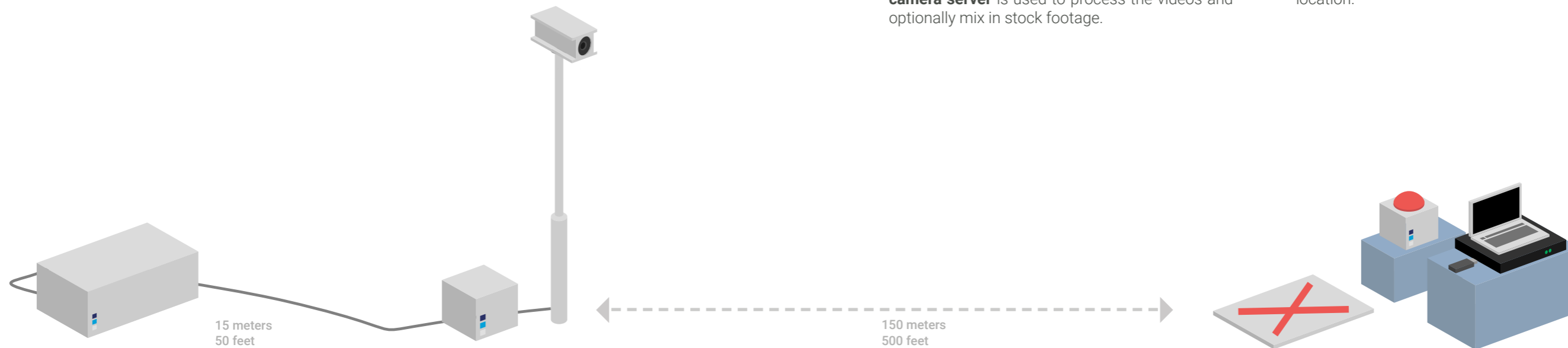
System Overview

Below and stretching across pages, is a visual representation of the system.

As an overview, the TMD Gigaselfie system works as follows: The guest stands on an '**X Marks the Spot**' on which the camera is centered and focused. Triggering is done by pressing the **Big Button**. Communication between trigger and camera is done wired or wireless, depending on the location needs.

The best results are reached with distances up to 150 meters / 500 ft. The **Processing Unit** receives the trigger and the camera begins recording. One **camera server** is used to process the videos and optionally mix in stock footage.

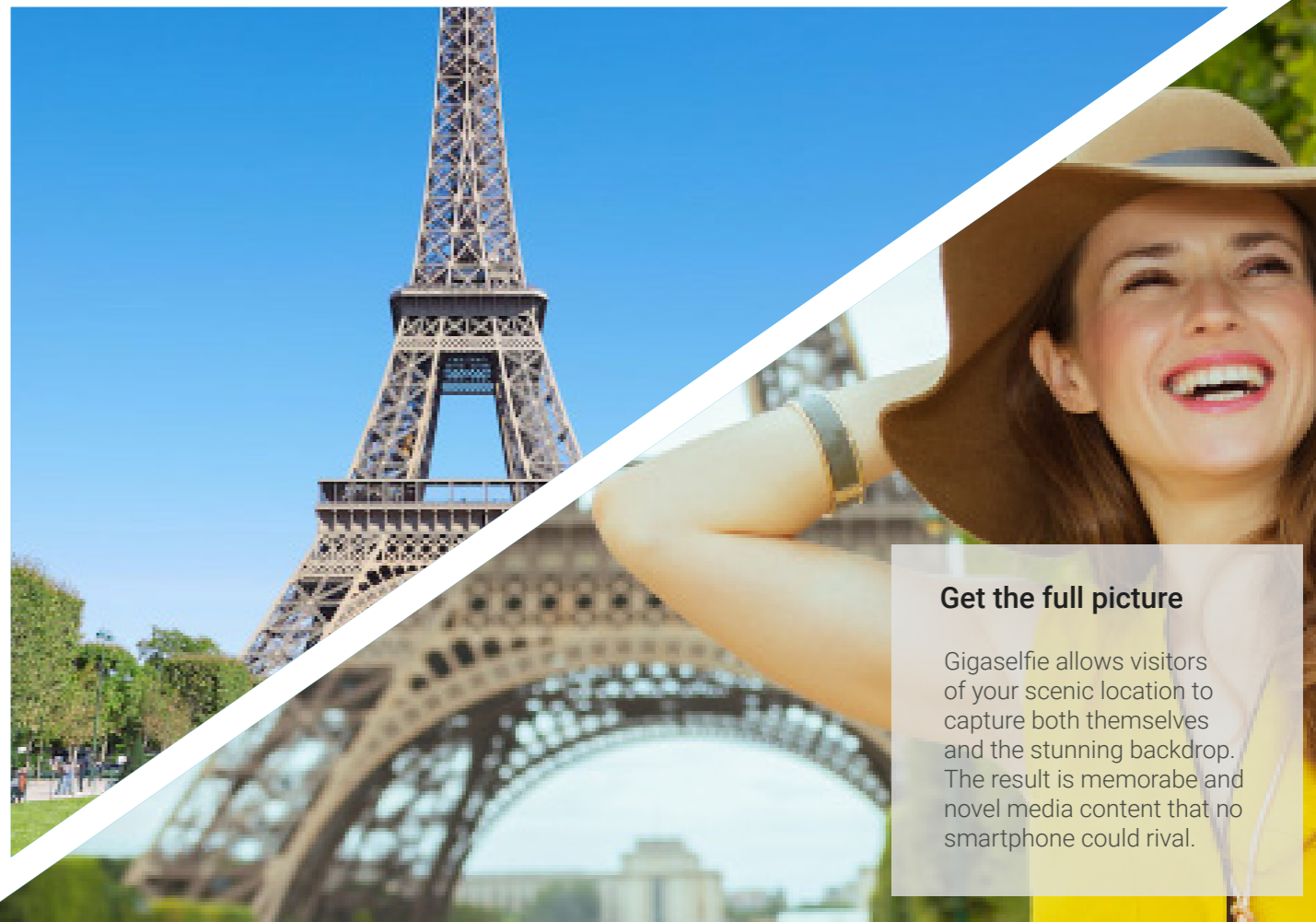
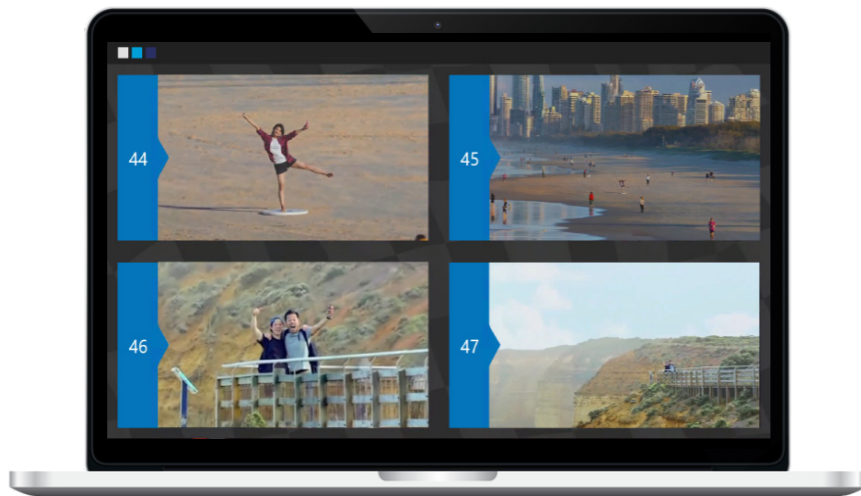
The finished product can be previewed and distributed. The **Sales Unit** is located by the trigger or by the camera, depending on your location.



The Journey

TMD Gigaselfie is a self-sufficient solution, where a closed circuit handles triggering and capturing. We are happy to help you determine the optimum location for the camera, but you probably already have some great ideas of your own. Next up is defining an 'X marks the spot' and positioning the trigger. We configure your setup to satisfaction and content is now ready to be distributed via USB or sent to mail. Easy, right?

- 1 Receive flightcase
- 2 Select a high point
- 3 Set up the camera
- 4 Set up the trigger
- 5 Set up delivery
- 6 Start sales



Get the full picture

Gigaselfie allows visitors of your scenic location to capture both themselves and the stunning backdrop. The result is memorabe and novel media content that no smartphone could rival.

Specifications

The below specifications provide a more in-depth overview of the system's features. Many of these features can be configured to your needs upon completion of the installation. An example video from the TMD office can be [viewed here](#).



The zoom-out will happen over ~4 seconds at maximum distance.



A qualitative still frame from the initial moments is extracted and shown for a set amount of seconds. This process repeats at the end.



The video will contain an intro and outro with stock material (video or picture). Stock material should be provided by your marketing department.



The end-product video can contain audio. This will be stitched into the video.



The recommended minimum time between button-presses is 30 seconds. This allows all tasks to be completed orderly.

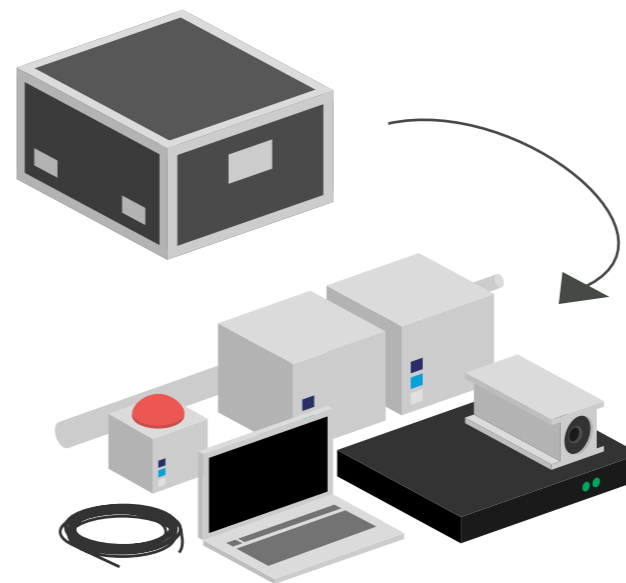


After creation, the videos (~80 MB in size) are immediately ready for preview and distribution.



We recommend one of your staff members be present at the 'X Marks the Spot' to both guide the process and sell the product.

All of the TMD GigaSelfie system fits in a single, sturdy flight case.



Things to remember...

TMD GigaSelfie is robust and powerful. It has been designed with optimal efficiency in mind. Please take notice of the following topics to ensure a smooth workflow:

- Analog zooming to a maximum distance of 150 meters / 500 ft works best.
- The power must remain connected to all devices. In case of a power loss, the connectivity HUB and optical fiber converter need to be reconnected.
- The current solution to provide videos is onto USB device. You are free to distribute via e-mail.
- Any slight movement (e.g. wind) will be amplified at a high zoom level. The camera must be fixated.
- Nighttime recordings require proper illumination at camera source and by the 'X Marks the Spot'



All of our solutions are in compliance with European privacy regulations.

Contact

In this document we have provided you with all the information you need about the TMD GigaSelfie system. If you have any further questions regarding the TMD Boxed system or the documents provided, please feel free to contact us.

If you are already in the possession of a TMD GigaSelfie system, please reference the contact details provided to you for any suggestions or questions regarding the solution.

If you wish to inquire about this solution or our products and services, please contact CK Foo with the information provided below.



+44 (0) 7850140631



CK.foo@TAPEMYDAY.com



www.tapemyday.com



ENJOY.
SHARE.
REMEMBER.


+44 (0) 7850140631




CK.foo@TAPEMYDAY.com




www.tapemyday.com